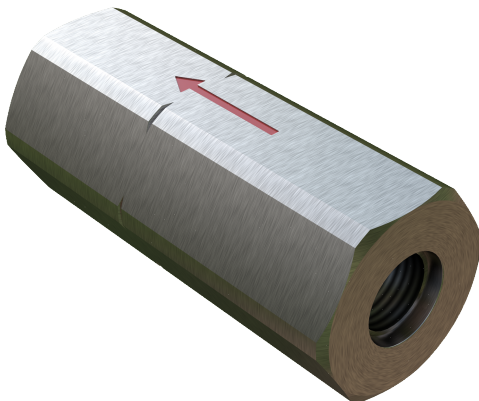


**Key Features**

- The poppet design of the valve has a PTFE primary seal with a metal to metal back-up
- Design ideally suited for hydraulic control fluid applications
- Standard certification for pressure retaining and controlling parts are to API 6A PSL 3 and BS EN 10204 3.1 (3.2 option available)

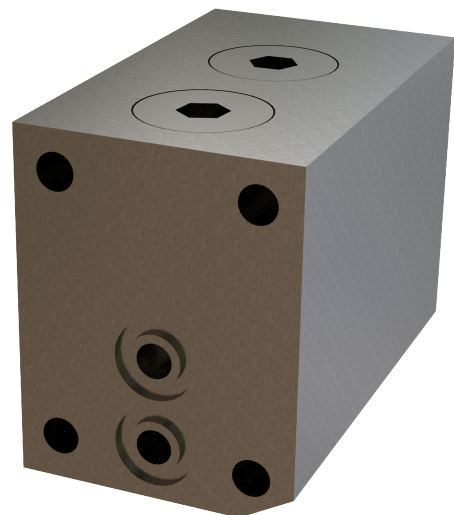


**Technical Specification**

- Bore size, 3/8" [10mm]
- Pressure rating, 10,000psi [690 bar]
- Operating temperature range of (-20°F/-29°C to 250°F/120°C)
- Available in Stainless Steels and Nickel Alloys

**Operator**

- Normal Cracking Pressure 7psi [0.5 bar] +/- 20%
- Optional Cracking Pressure to 500psi [35 bar] +/- 20%



Images shown are both 3/8" Check valves. The uppermost being an in-line check with SAE type process connections and the other being a twin check body with block mounting details. Due to the many options and configurations available with this product please contact Oliver Valvetek Sales for a bespoke solution.

Rev 1.2

Oliver Valvetek Ltd, Parkgate Industrial Estate, Knutsford, Cheshire, WA16 8DX. United Kingdom.

**T:** +44 1565 632636 **E:** [sales@valves.co.uk](mailto:sales@valves.co.uk) **W:** [www.valves.co.uk](http://www.valves.co.uk)

© Oliver Valvetek 2009